



2010 Yulefest Packages

Available Saturdays from 26/06/10 to 14/08/10

PACKAGE INCLUSIONS:

- ♦ Two nights accommodation
- ♦ Continental Buffet breakfast each morning
- ♦ Pre-dinner drink & winter canapés in The Lounge
- ♦ Traditional 5 course Yulefest dinner, coffee & tea
- ♦ Carollers, Highland Pipers, Santa & more!



Traditional Rooms - Budget

Located on the first floor in their own wing, these rooms offer the original Carrington experience with separate ladies and Gentlemen's share bathroom facilities.

\$525.00 per room (\$410.00 for a Saturday only stay)

Colonial Rooms

Situated on the first floor, in the north wing, these rooms were built in 1927. While these rooms do not offer views, they provide bay window seats, stained glass features and large deep baths.

\$720.00 per room (\$520.00 for a Saturday only stay)



Premier Balcony Rooms

Opening through French doors onto the first floor shared balcony, these rooms offer ensuites and direct access to valley views across Katoomba & Leura Townships.

\$840.00 per room (\$590.00 for a Saturday only stay)

Premier Spa Rooms

These rooms are located on the second and third floors. They are spacious with large ensuites and corner spas. Premier Spa rooms are available with or without views. View rooms look out over Katoomba Township.

Non-View Spa rooms: \$770.00 per room (\$555.00 for a Saturday only stay)

View Spa rooms: \$840.00 per room (\$590.00 for a Saturday only stay)



Junior Suites

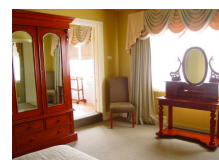
These Suites contain queen sized four poster beds, large ensuites with corner spas, bathrobes and flat screen televisions. Two Suites offer views towards the Jamison Valley while the third features stained glass windows.

\$950.00 per room (\$640.00 for a Saturday only stay)

The Tomah Suite

This two room Suite has a separate lounge area, large ensuite with corner spa, bathrobes and flat screen television.

\$990.00 per Suite (\$660.00 for a Saturday only stay)



The Joynton Smith Suite

This two room Suite contains a four poster bed, separate lounge area, large ensuite with a claw foot bath and antique shower, bathrobes and flat screen television. This Suite also offers access to the first floor shared balcony with views across Katoomba Township towards the Jamison Valley.

\$1140.00 per Suite (\$745.00 for a Saturday only stay)

The Lord Carrington Suite

The Hotel's signature Suite offers two bedrooms, walk in robe, large ensuite with corner spa, separate lounge area, bathrobes and flat screen television. This Suite also offers access to the first floor shared balcony with views across Katoomba Township towards the Jamison Valley.

\$1180.00 per Suite (\$760.00 for a Saturday only stay)



The Coach House Apartment

Our apartment offers three separate bedrooms, two bathrooms both featuring large spas, spacious lounge area and a fully self-contained kitchen. The Coach House is a non-serviced apartment and requires a two night minimum stay.

\$1400.00 for the Coach House* (Two night minimum stay)

* Rate applies to four people; extra charge applies to additional guests in the apartment

The above packages are based on 2 people per room. Additional adults & children over 12 years are an extra \$230.00 each (for 2 night package) or \$180.00 each (for 1 night package). Children aged 5-12 years are an extra \$120.00 each (for 2 night package) or \$90.00 each (for 1 night package). Conditions apply and packages are subject to availability. Rates may change without notice. Bookings are essential. All prices include GST.